



# AMBIKA ENGINEERING WORKS

19, Gr.Floor,Shanta Industrial Premises Co-op Society Ltd, I.BPatel Road, Goregaon (East) Mumbai - 400063  
 Tel : 022-26858793 • Cell : 09821271748 • Telefax : 022-26852558

## Wafer Type Non Slam Check Valve

### Salient Features and Specialities:

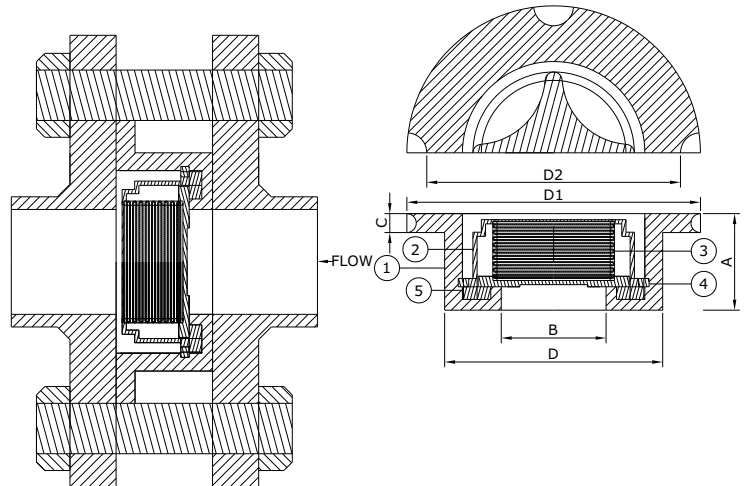
- + Spring closing arrangements for the prevention of reverse flow the pipelines.
- + These valves are general purpose valves that are stronger, lighter and smaller than conventional swing check valves and therefore, less expensive to install and maintain.
- + Suitable for higher pressure /temperature (up to 4000C).
- + Compact design for simple installation between wide ranges of flange types.
- + It can be mounted in any plane/direction.
- + Extremely low opening pressures.
- + Spring assisted silent closing.
- + Available sizes 15mm to 100mm,suitable for PN6-PN40 and 150/300.
- + Weight and Dimension are same for class 150 & class 300 valves.
- + Valves are self-centering type.
- + Zero leakage for soft seated valves.
- + The maximum permissible leakage rate shall be 3 cubic centimeters per inch of nominal pipe size for metal-seated valves.



**Size range : 1/2" to 4"**

MOUNTING ARRANGEMENT

SR NO.	NAME OF PART	MATIRIAL
1	BODY	A.I.S.I.316/W.C.B.
2	YOKE	A.I.S.I.316
3	SPRING	A.I.S.I.316
4	DISC.	A.I.S.I.316
5	CIRCLIP	A.I.S.I.316



SIZE	A	B	C	D	D1	D2
15	17	15	4	36	50	43
20	20	20	4	43	60	53
25	23	25	5	52	70	63
40	32	40	6	78	91	84
50	40	50	7	90	106	96
65	46	65	8	110	126	116
80	50	76	20	130	130	
100	60	100	20	159	159	